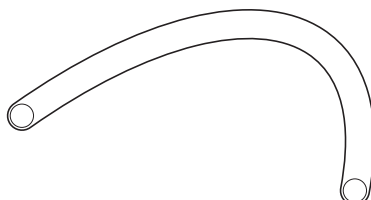
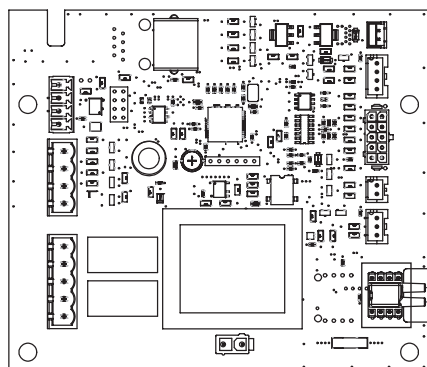


Carte électronique • PCB (Printed Circuit Board)

Tube cristallin • Clear flexible

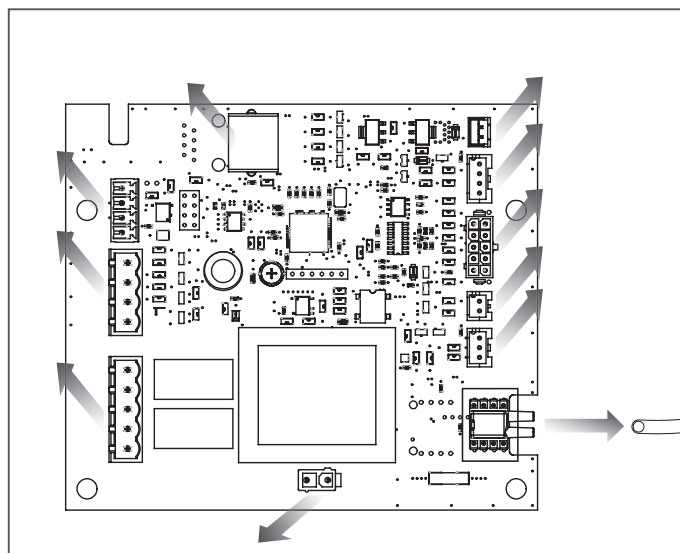
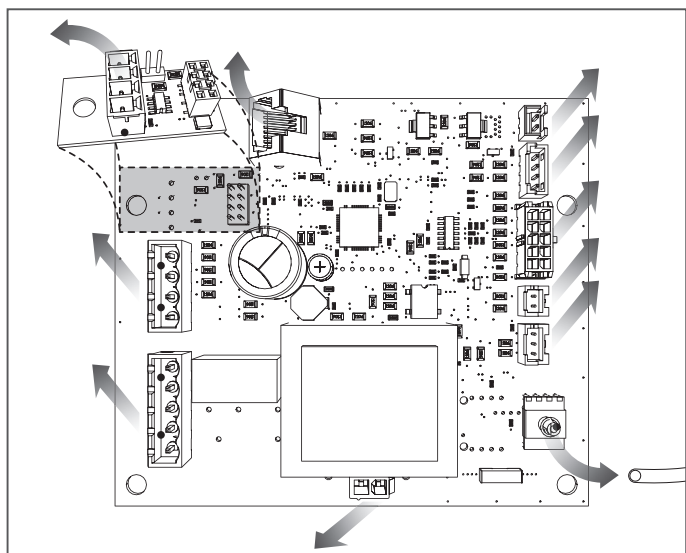
Raccord droit • Barbed connector



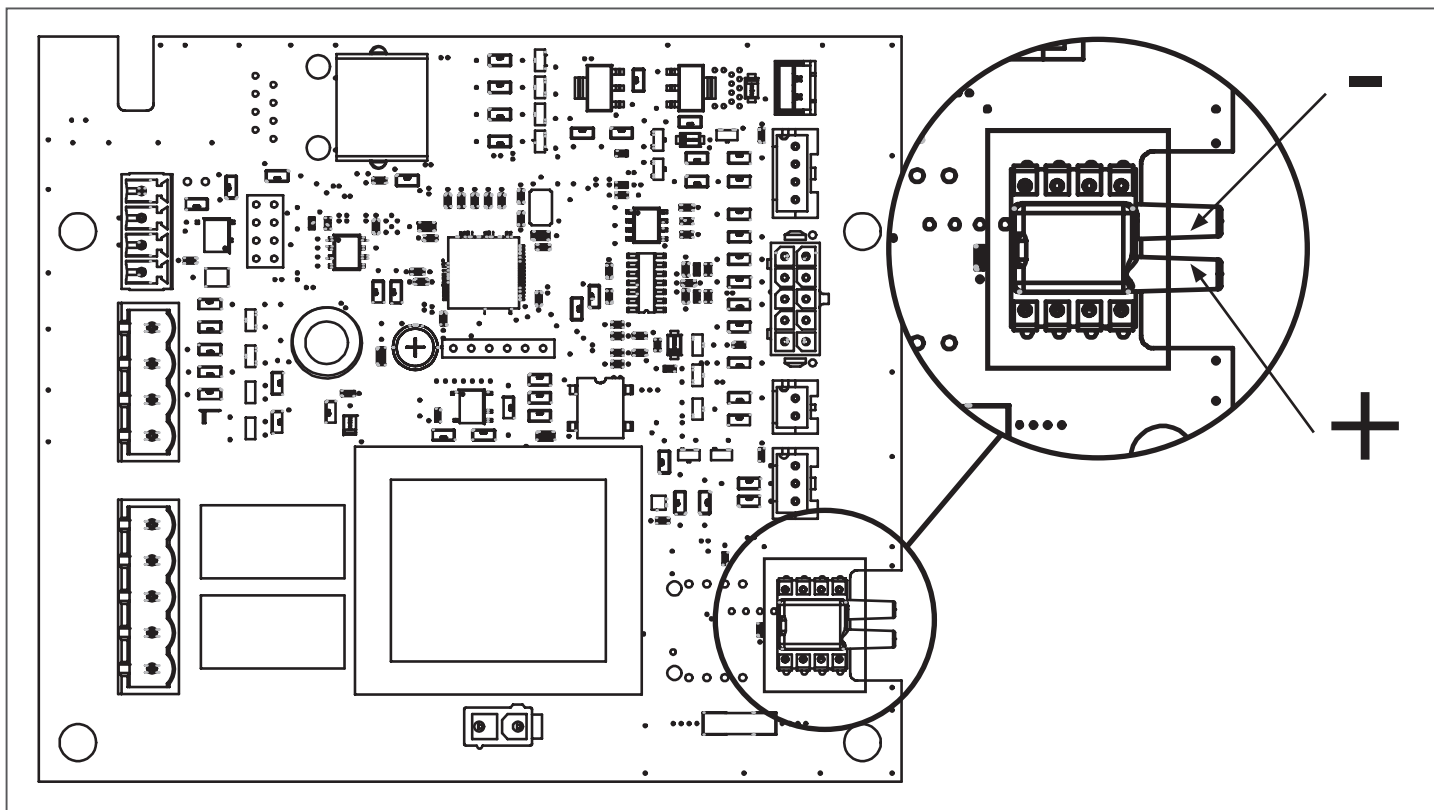
**FR** L'étape de paramétrage (page 3) est obligatoire pour que le ventilateur fonctionne correctement. Ne pas le paramétrer peut gravement endommager le ventilateur.

**EN** Configuration step is mandatory (see page 3). Skipping this could severely damage the product.

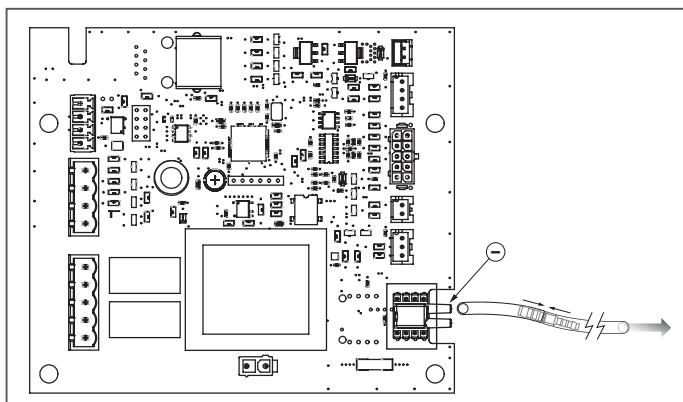
## 1. DÉBRANCHEMENT DE L'ANCIENNE CARTE • OLD PCB DISCONNECTION



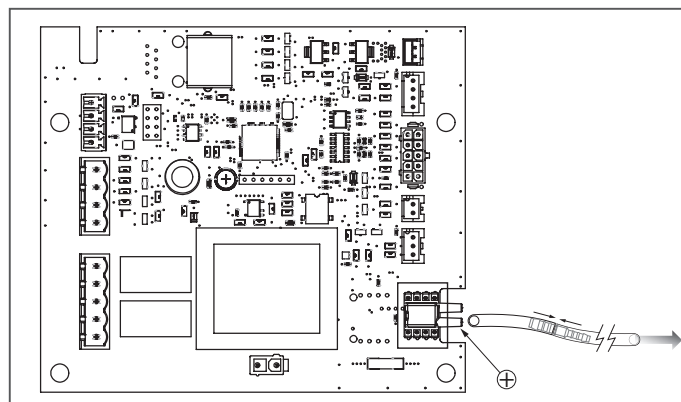
## 2. REMPLACEMENT DE LA CARTE ÉLECTRONIQUE • PCB REPLACEMENT



Raccordement en extraction • Air exhaust operation

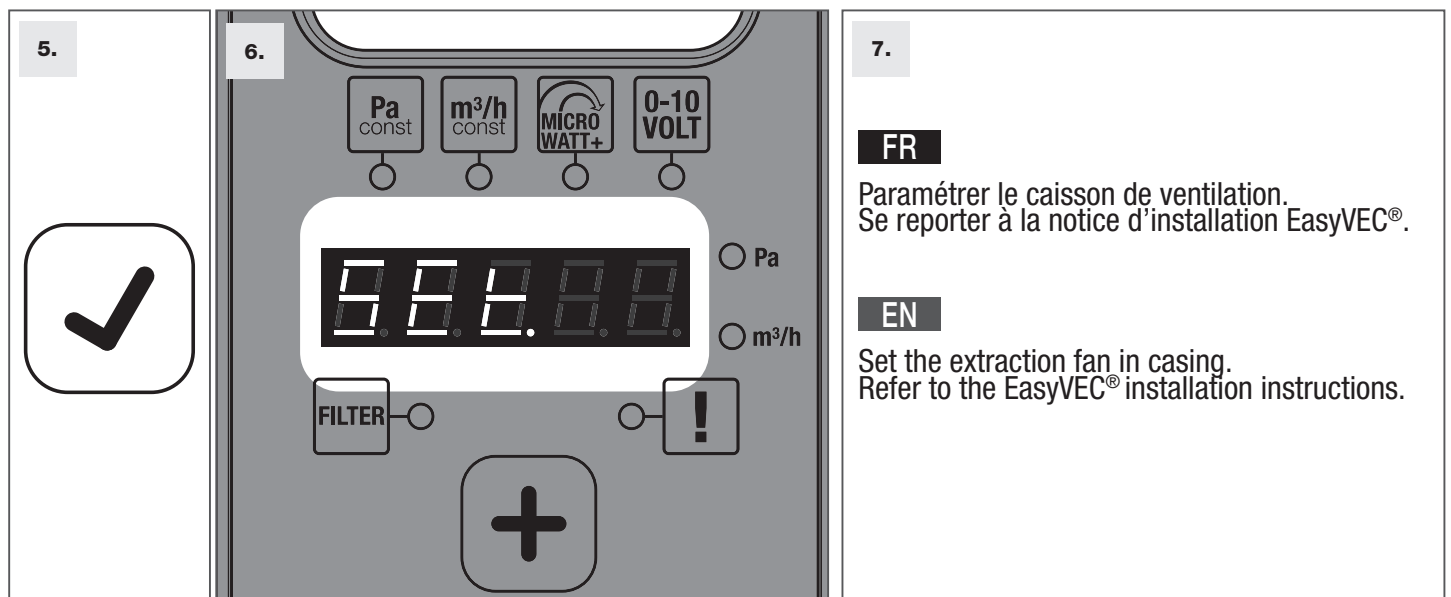
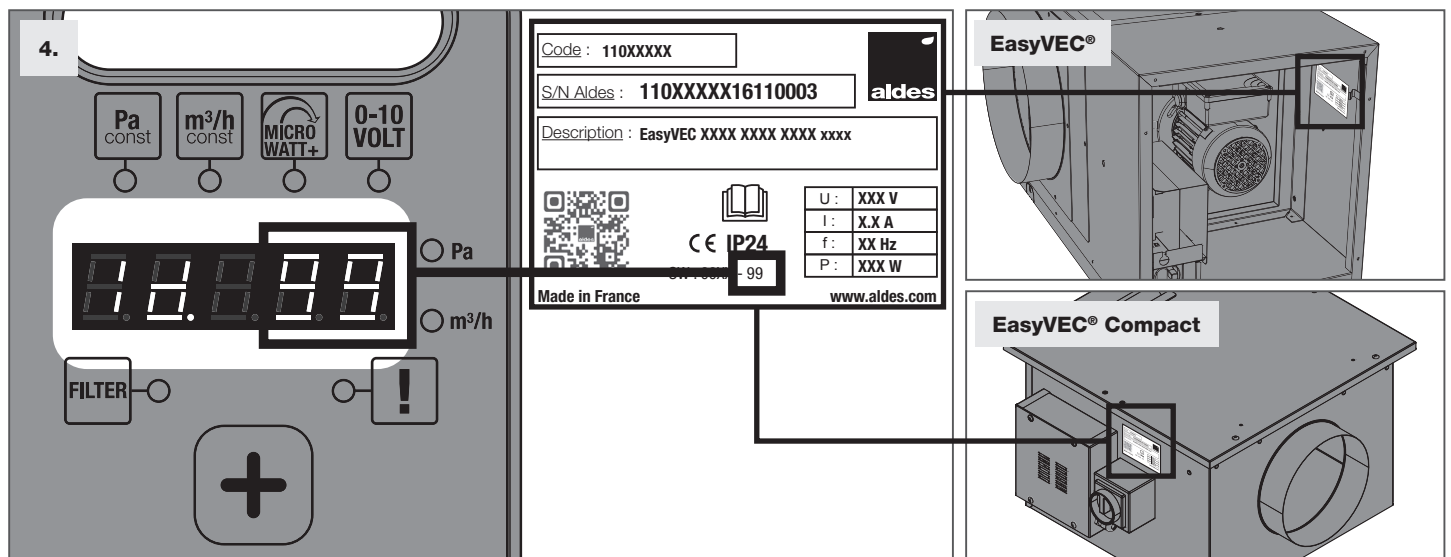
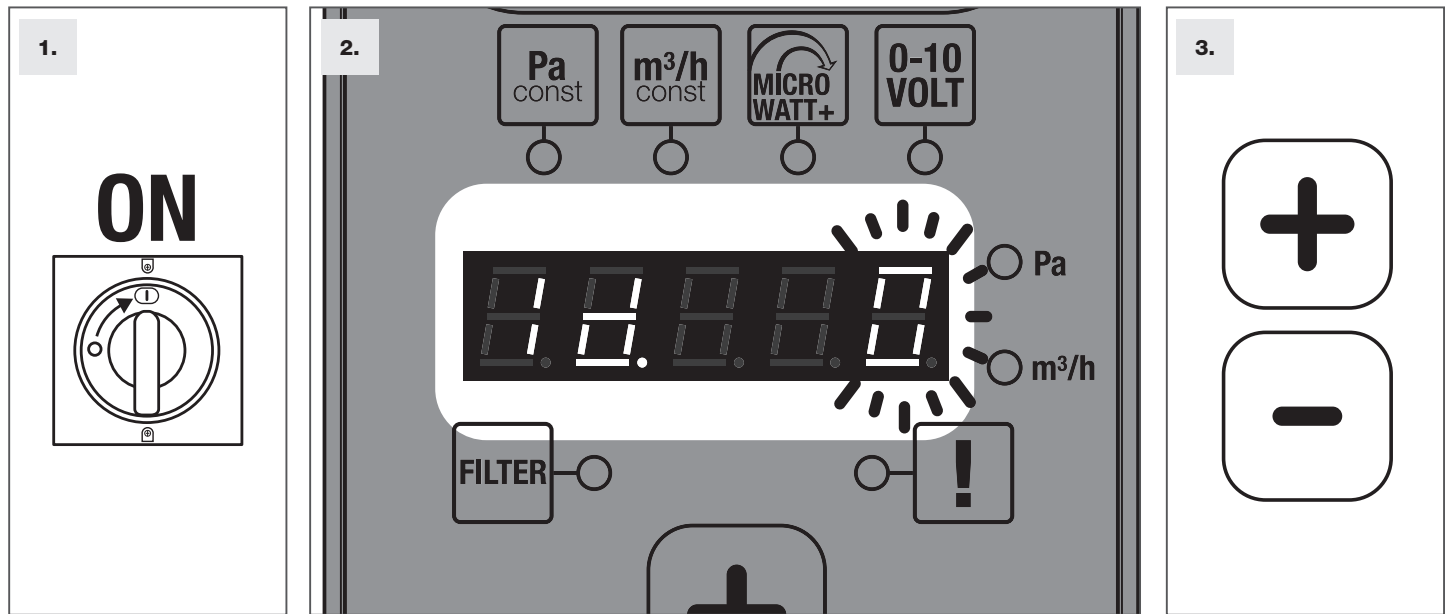


Raccordement en insufflation • Air supply operation



### 3. PARAMÉTRAGE • SETTING

#### 3.1. Paramétrage via télécommande EasyVEC® • Setting with the EasyVEC® remote control.

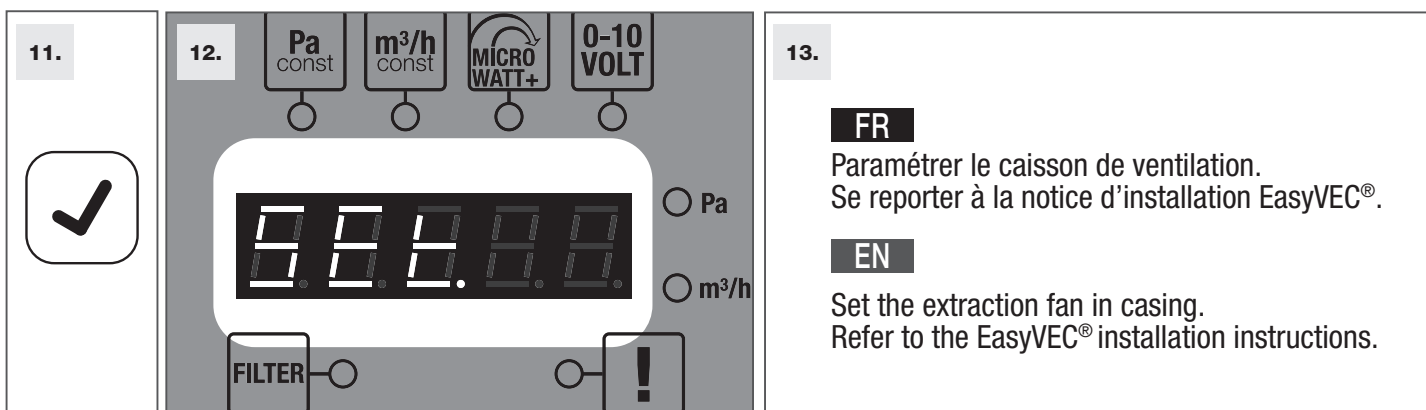
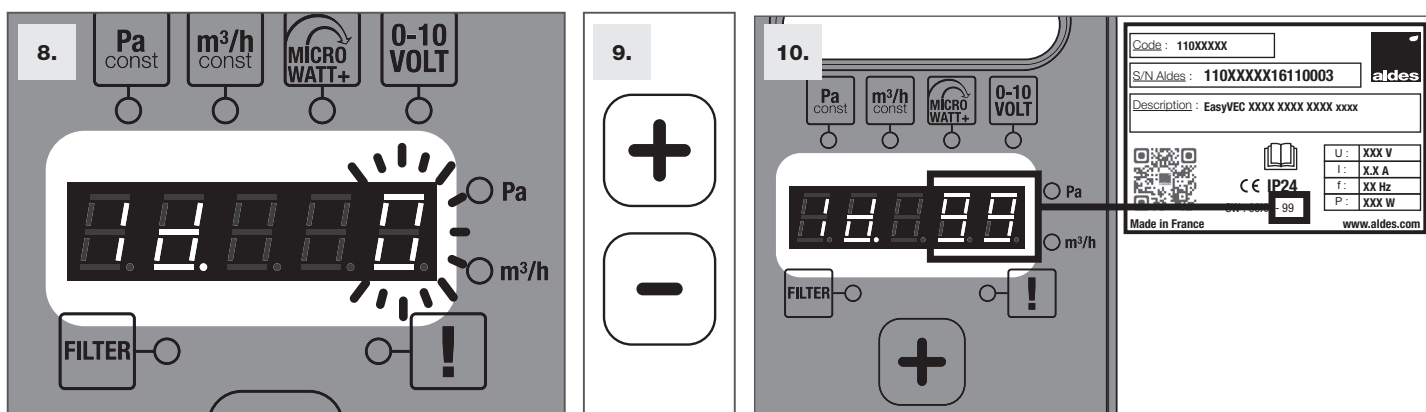
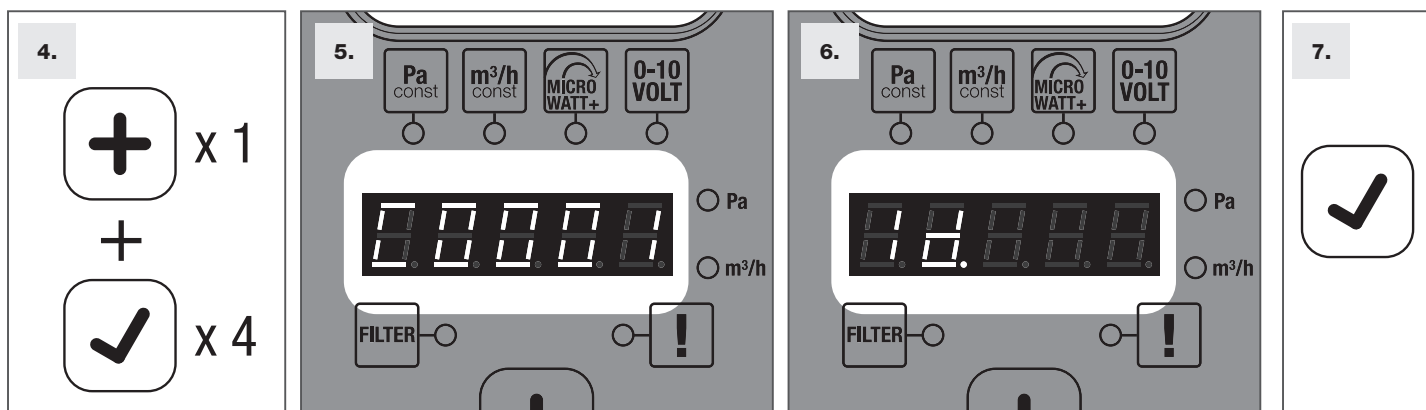
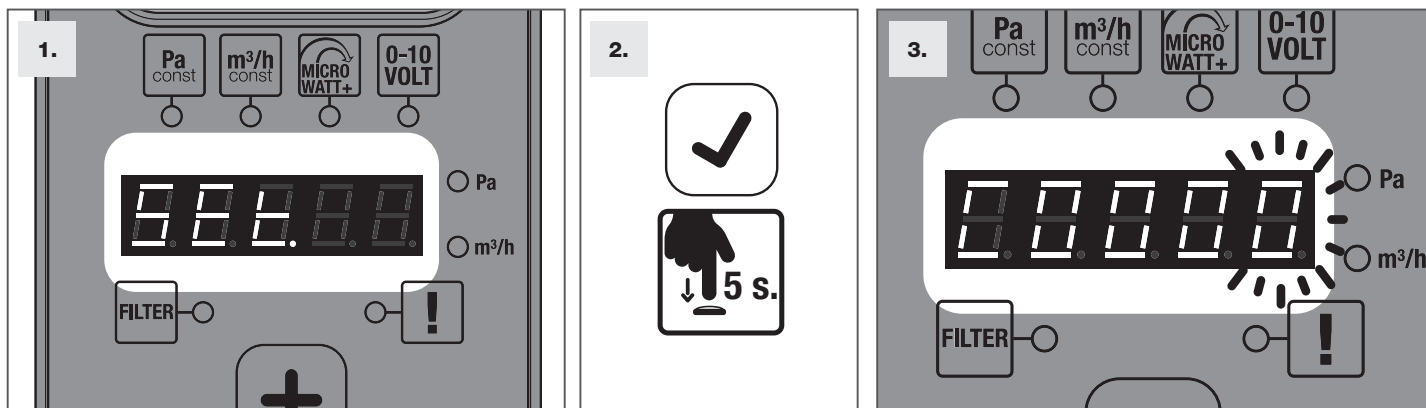


## 3.2. Changement de paramétrage • Change setting



**FR** Étape à réaliser uniquement si un paramètre erroné a été saisi lors de l'étape précédente.

**EN** Perform this step only if a wrong setting was entered on the previous step.



**FR**  
Paramétrer le caisson de ventilation.  
Se reporter à la notice d'installation EasyVEC®.

**EN**  
Set the extraction fan in casing.  
Refer to the EasyVEC® installation instructions.